

SKYLINER

HOME SERIES



SKYLINE[®]

BRINGING AMERICA HOME. BRINGING AMERICA FUN.
ARKANSAS CITY, KANSAS

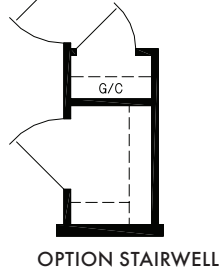
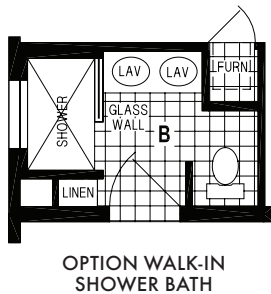
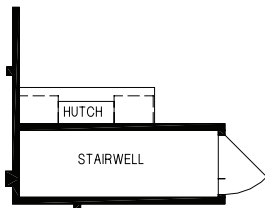
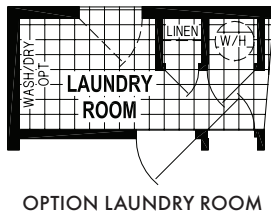
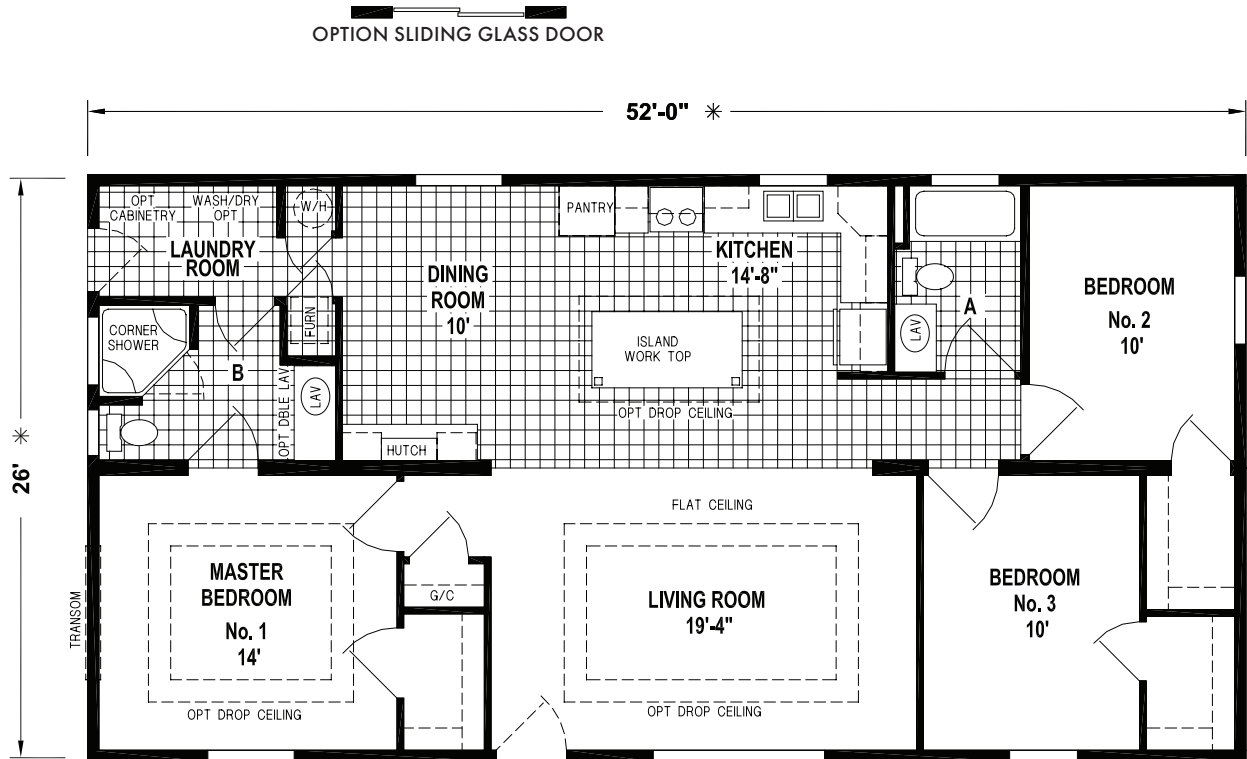


NAHB
NATIONAL ASSOCIATION
OF HOME BUILDERS

SKYLINER

4712B

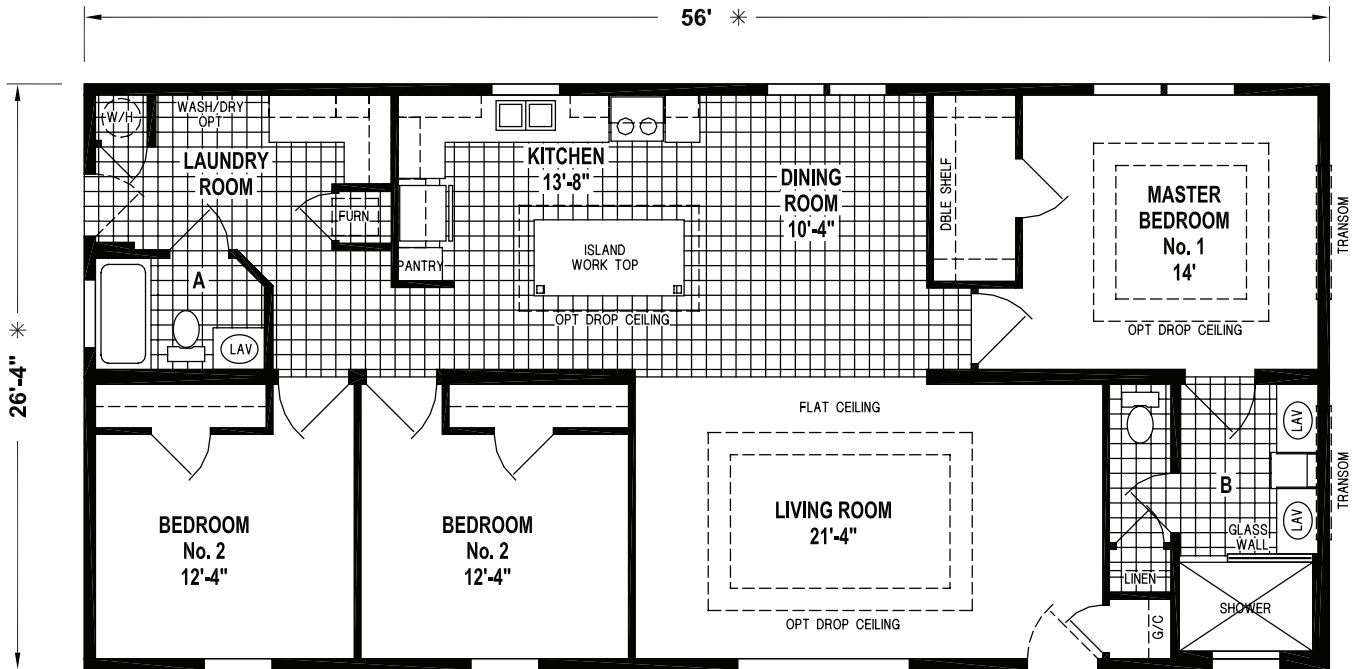
52' x 28' - 1,352 SQ. FT. - 3 BEDROOMS - 2 BATHS



4709B

56' x 28' - 1,474 SQ. FT. - 3 BEDROOMS - 2 BATHS

OPTION SLIDING GLASS DOOR



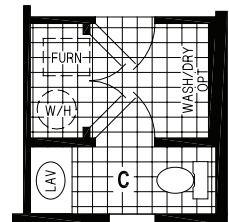
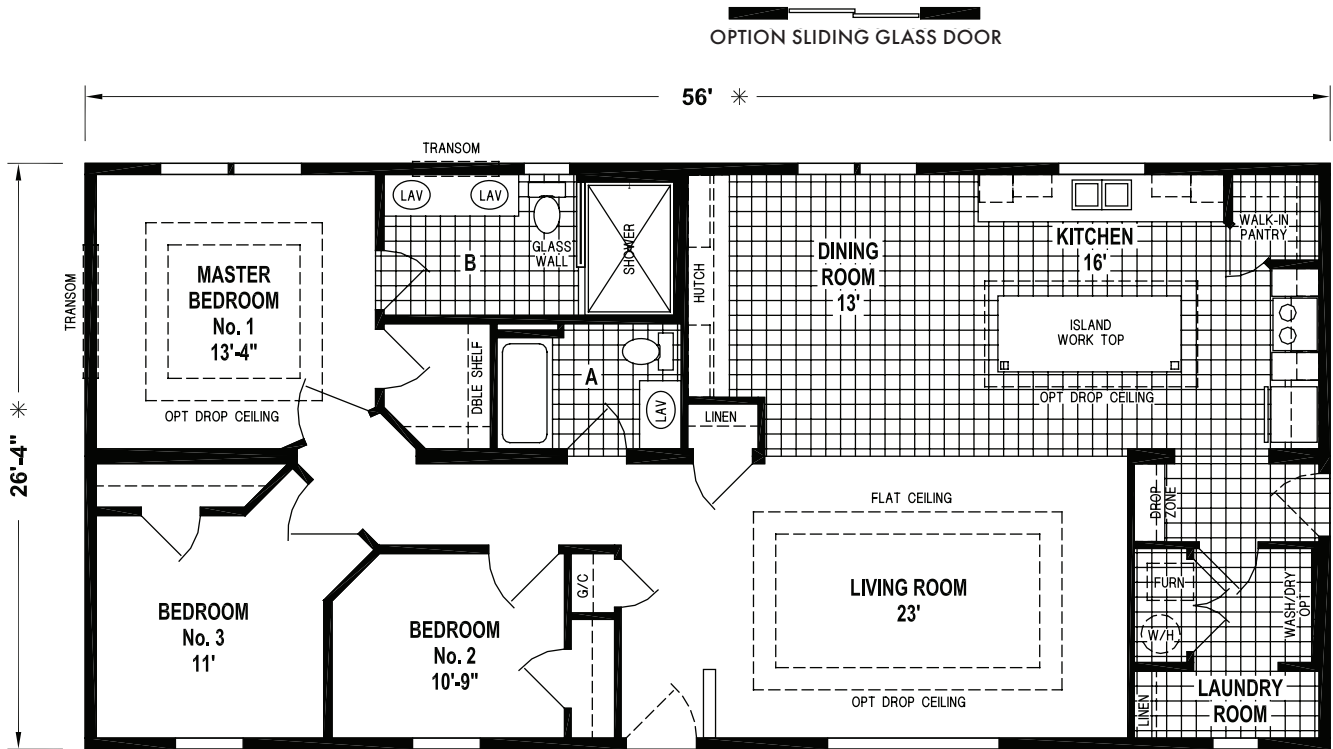
Inspired touches make the Skyliner series by Skyline Homes anything but ordinary. Skyline offers three and four bedroom models, each with two baths. Whether you opt for the base floor plan or the optional den and laundry room, you're sure to find a comfortable place to call home.

Manufactured in Arkansas City, Kansas and backed by over 65 years of manufacturing experience, a 15-month warranty and stellar customer service – take a look for yourself to see why the Skyliner series is the right decision for you and your family.

28' SERIES

4724B

56' x 28' - 1,474 SQ. FT. - 3 BEDROOMS - 2 BATHS



OPTION HALF BATH

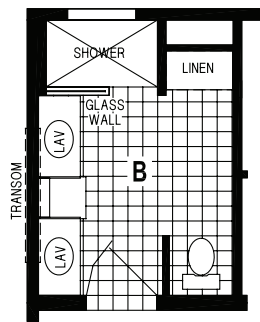
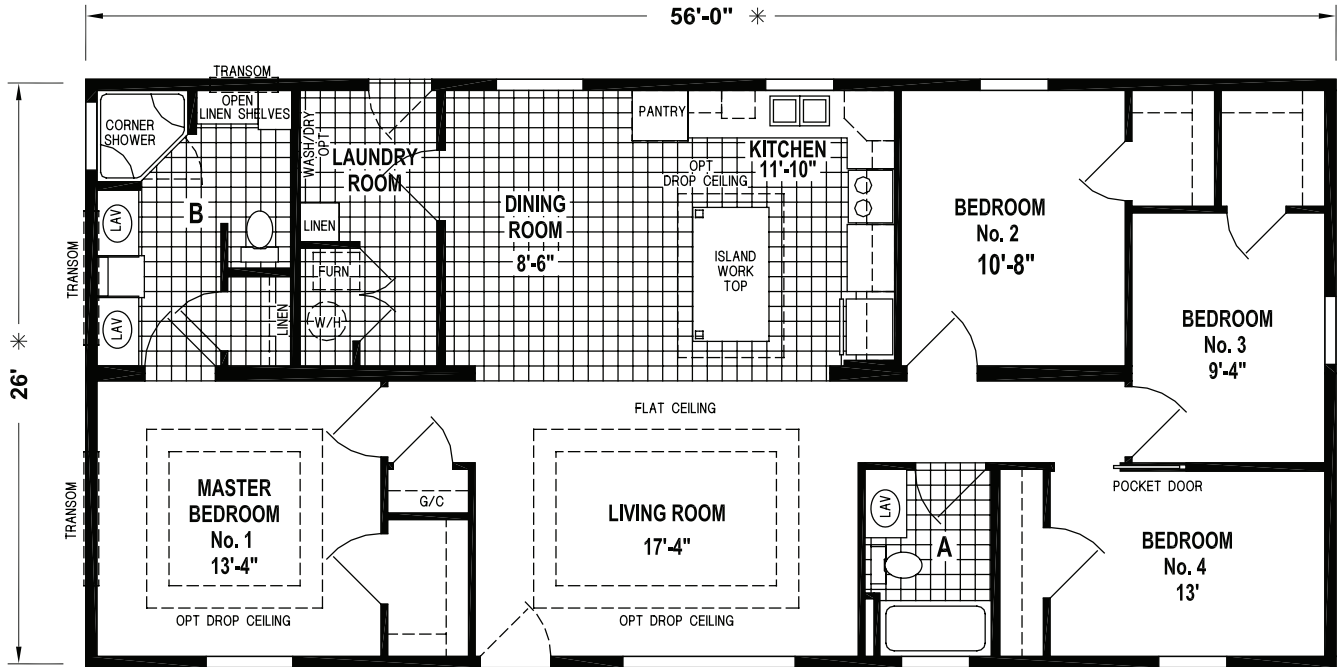
SKYLINE HOMES -
COMMITTED TO QUALITY
CRAFTSMANSHIP, VALUE &
CUSTOMER SATISFACTION

All Skyline homes are covered by our no-nonsense 15-month warranty, the very best in the industry. It's our way of showing our customers how much we believe in the quality we build into every Skyline home. Our warranty gives new homeowners the assurance that comes from working with a company with more than six decades of building.

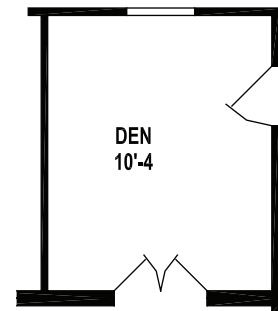
4751B

56' x 28' - 1,456 SQ. FT. - 4 BEDROOMS - 2 BATHS

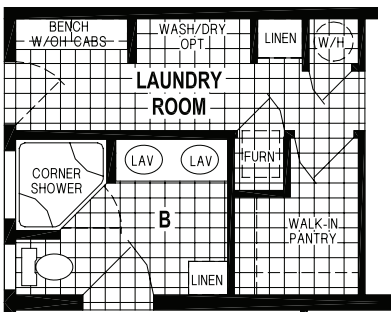
OPTION SLIDING GLASS DOOR



OPTION WALK-IN SHOWER BATH



OPTION DEN



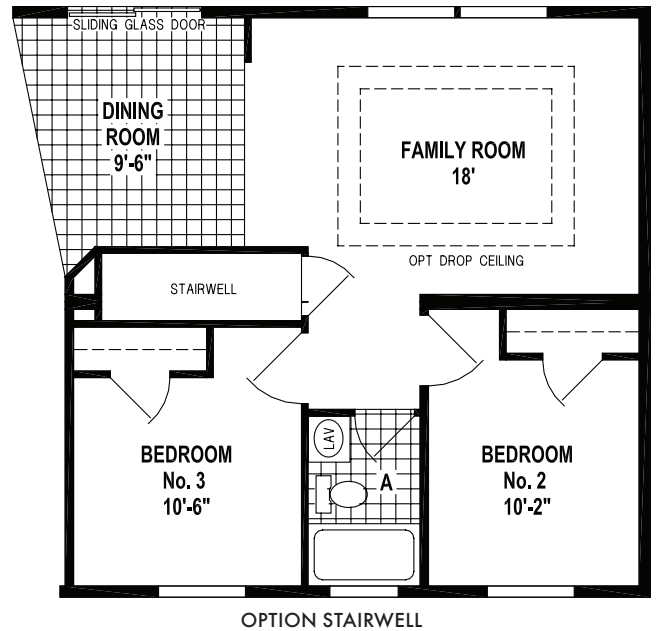
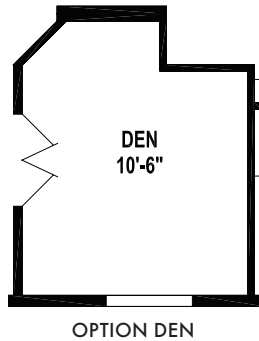
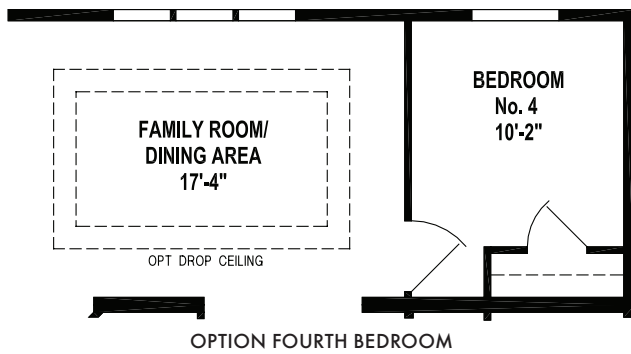
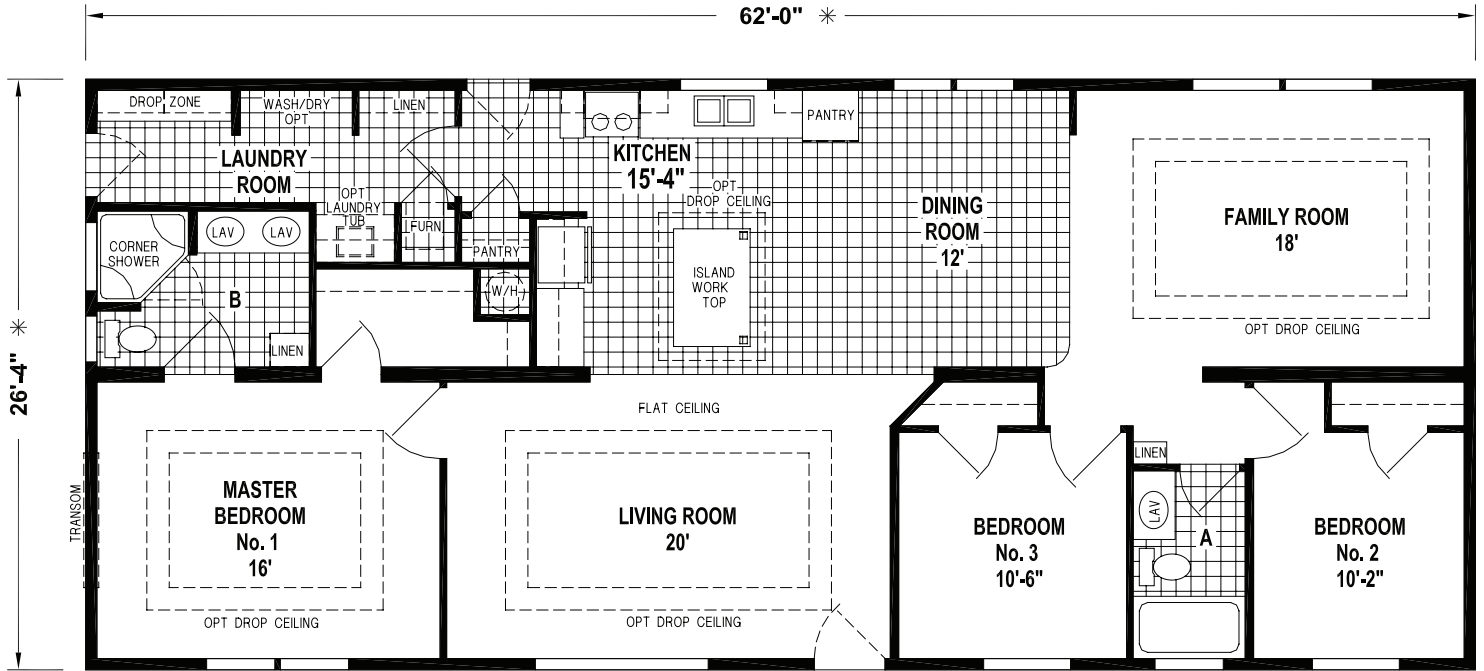
OPTION LAUNDRY ROOM

28' SERIES

4734B

62' x 28' - 1,632 SQ. FT. - 3 BEDROOMS - 2 BATHS

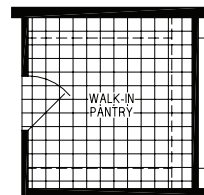
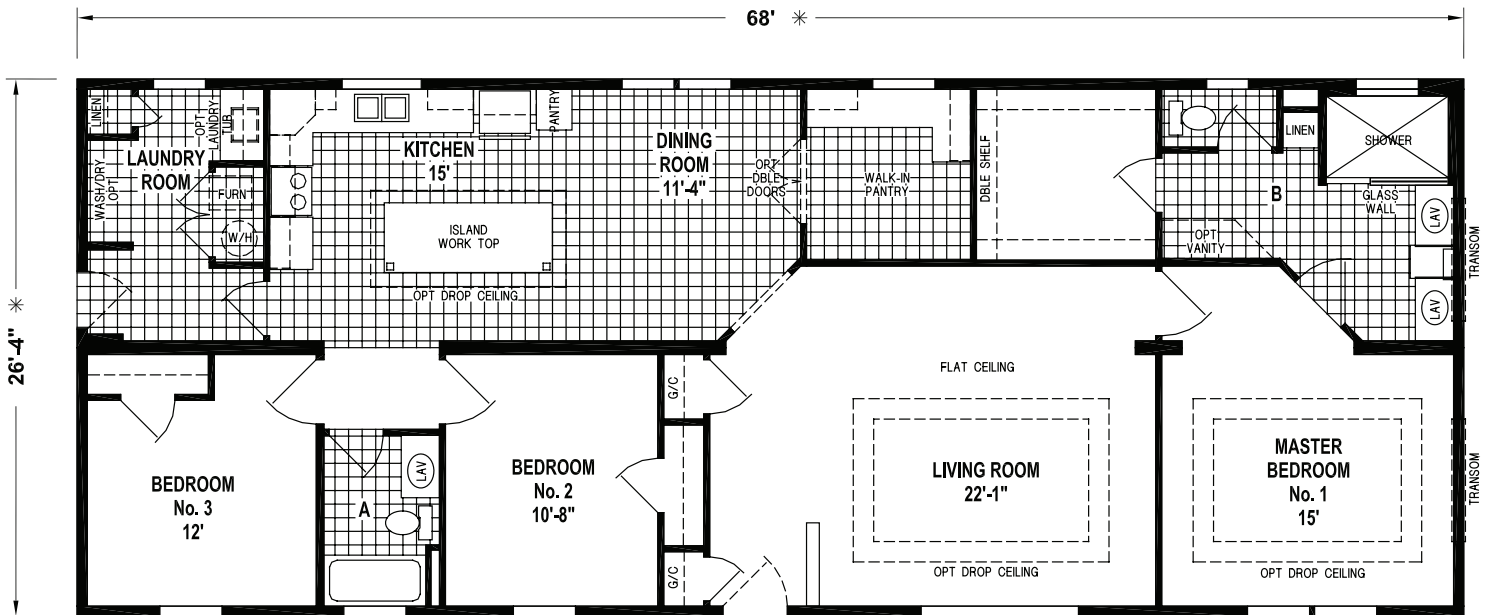
OPTION SLIDING GLASS DOOR



4758B

68' x 28' - 1,790 SQ. FT. - 3 BEDROOMS - 2 BATHS

OPTION SLIDING GLASS DOOR



OPTION WALK-IN PANTRY

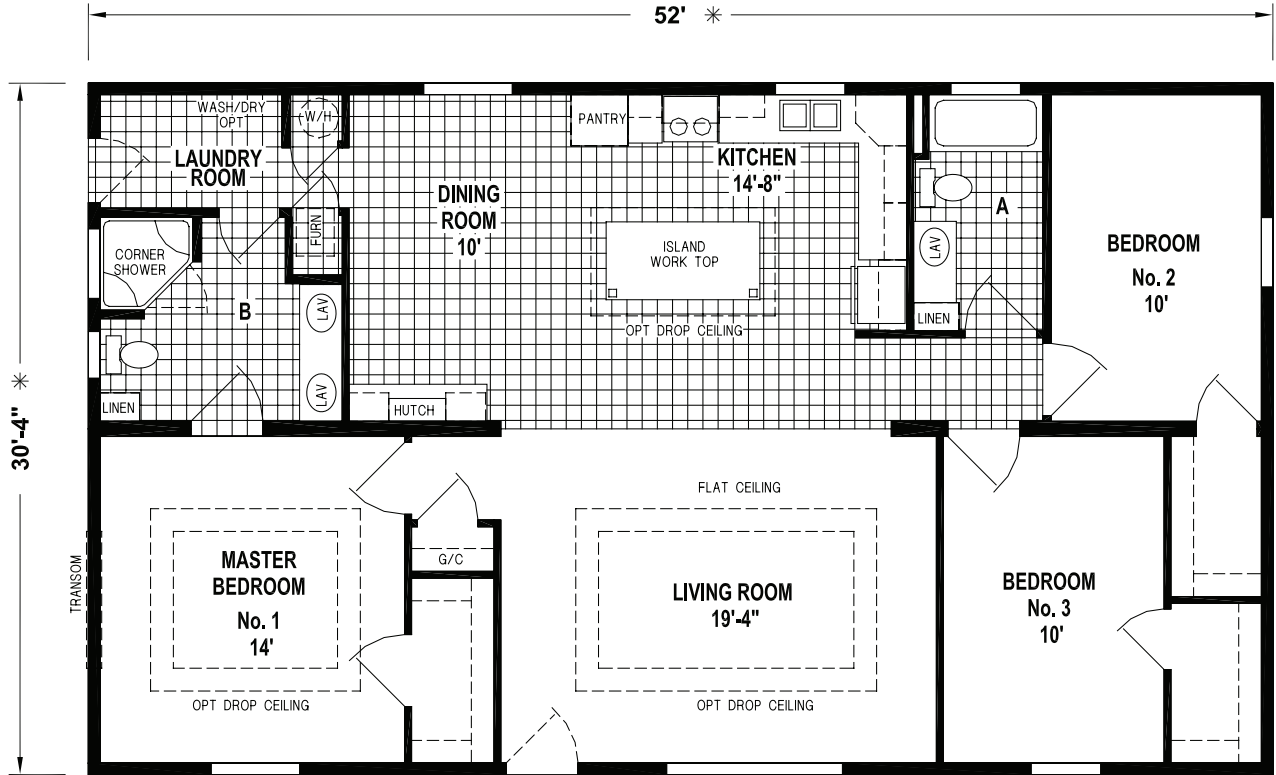


32' SERIES

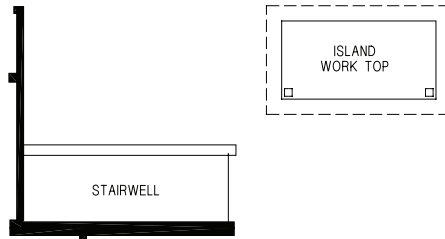
6312B

52' x 32' - 1,577 SQ. FT. - 3 BEDROOMS - 2 BATHS

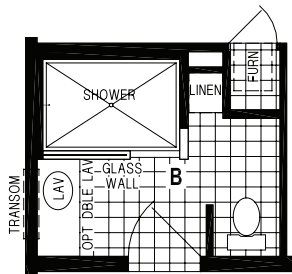
OPTION SLIDING GLASS DOOR



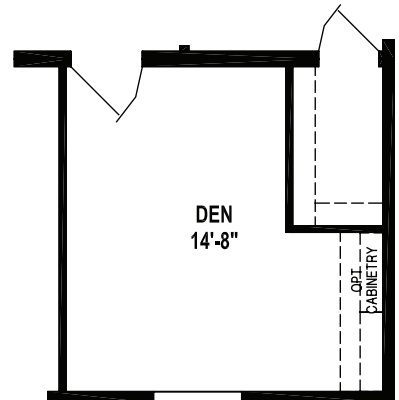
OPTION LAUNDRY ROOM



OPTION OPEN STAIRWELL



OPTION WALK-IN SHOWER BATH

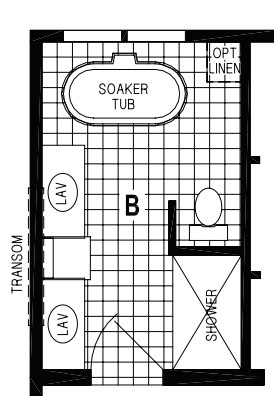
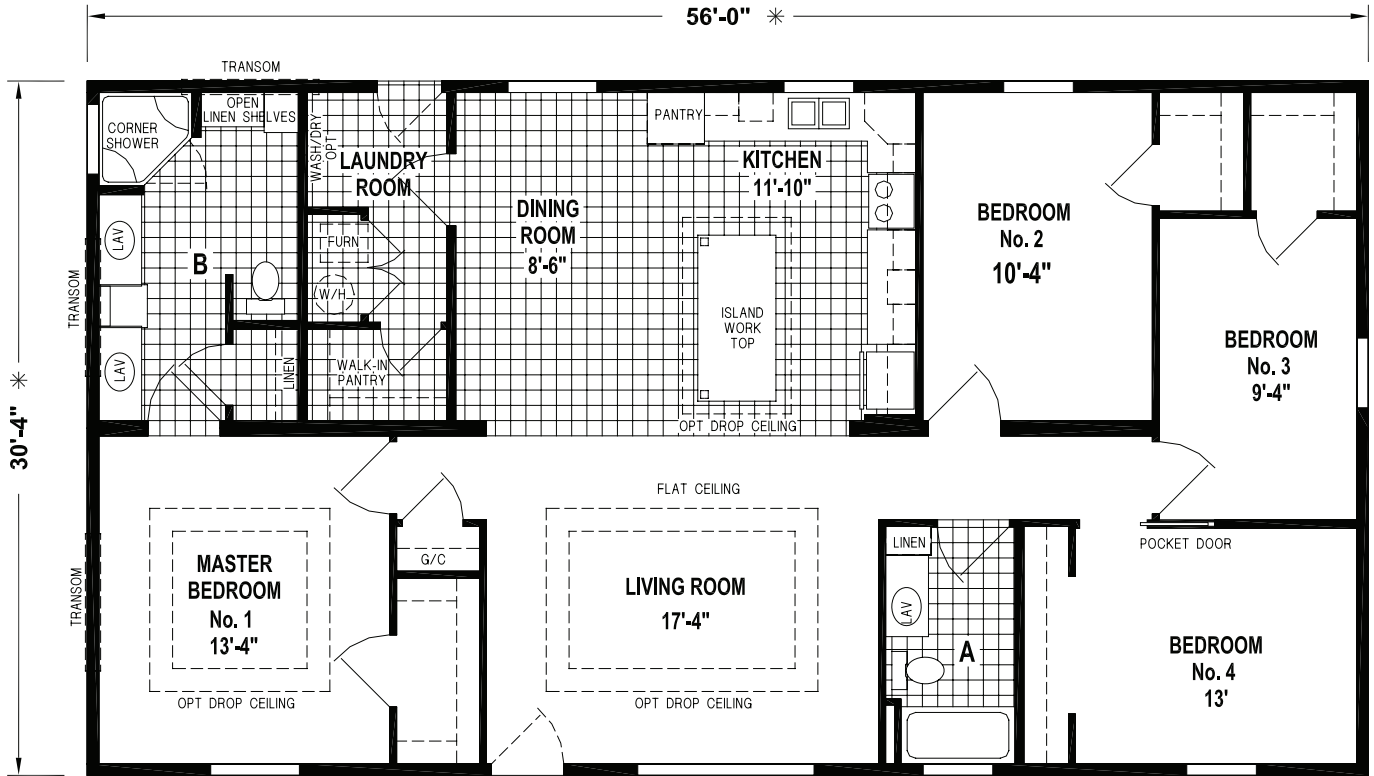


OPTION DEN

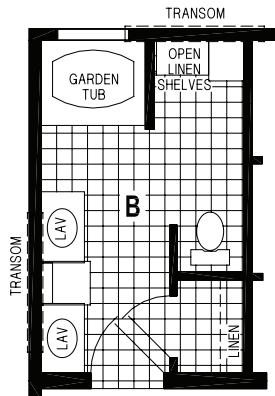
6351B

56' x 32' - 1,698 SQ. FT. - 4 BEDROOMS - 2 BATHS

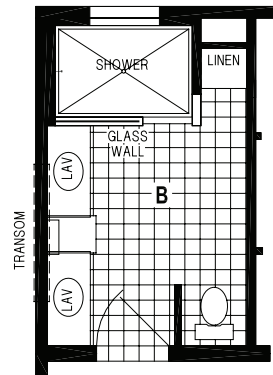
OPTION SLIDING GLASS DOOR



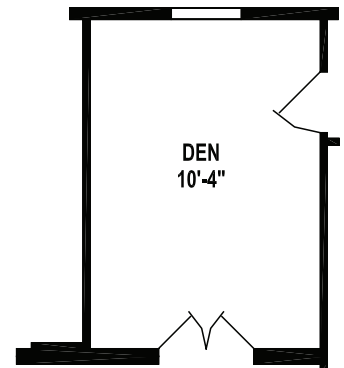
OPTION SOAKER TUB BATH



OPTION GARDEN TUB BATH



OPTION WALK-IN SHOWER BATH



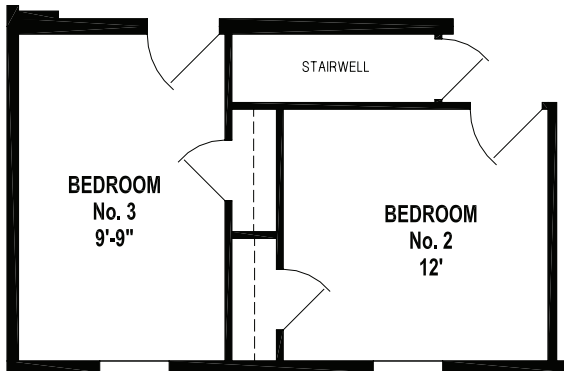
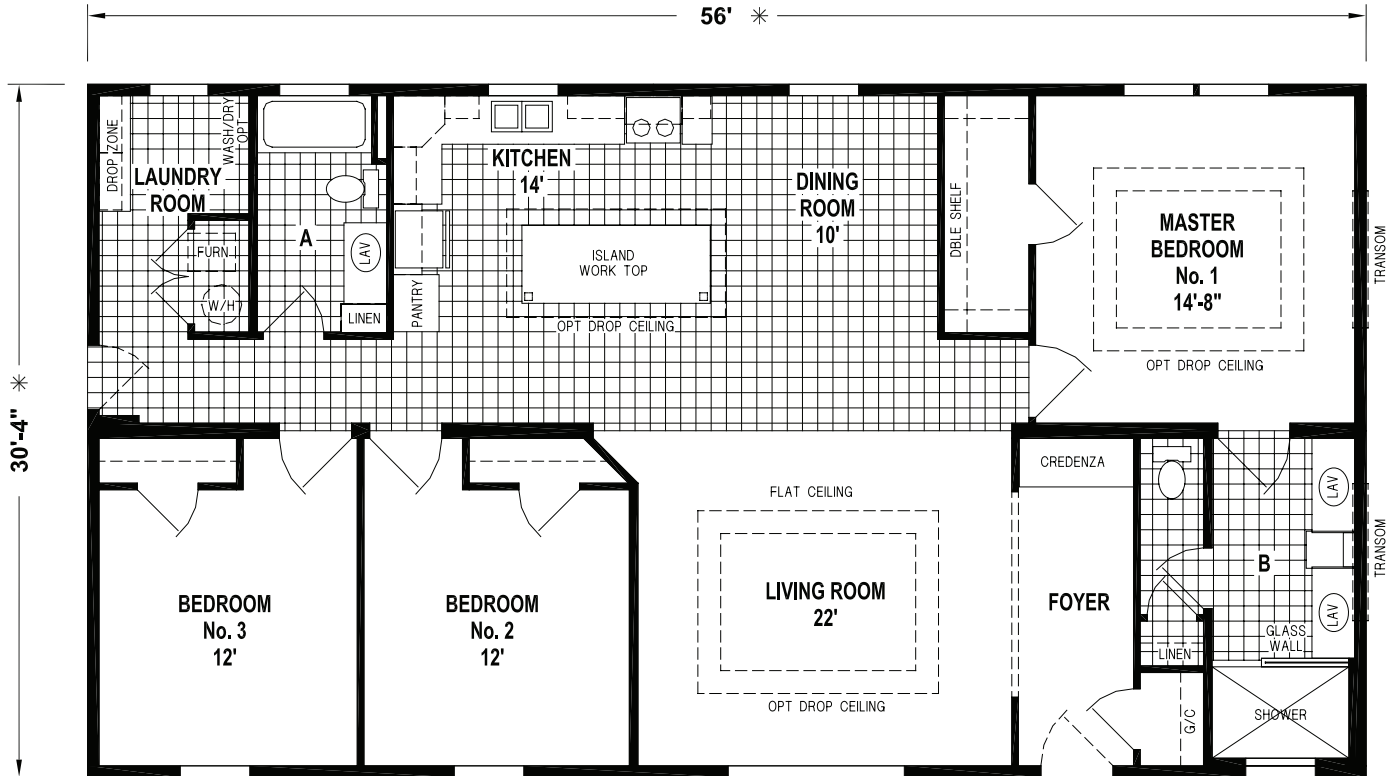
OPTION DEN

32' SERIES

6352B

56' x 32' - 1,698 SQ. FT. - 3 BEDROOMS - 2 BATHS

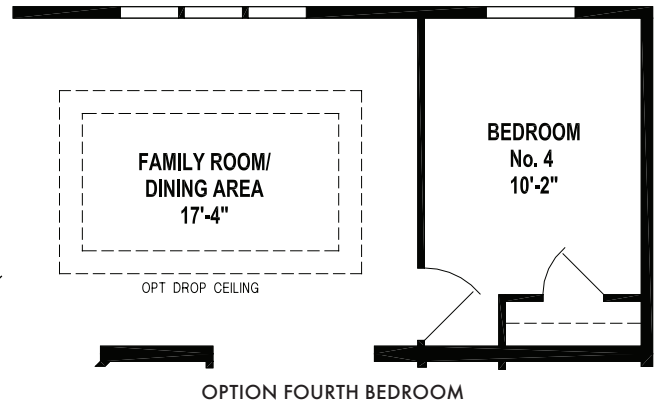
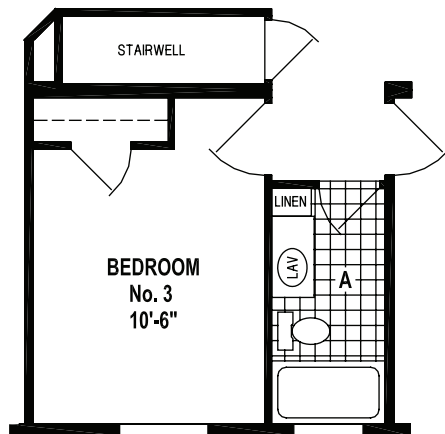
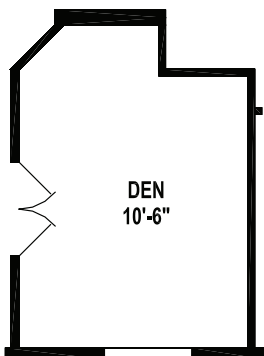
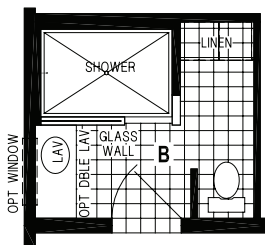
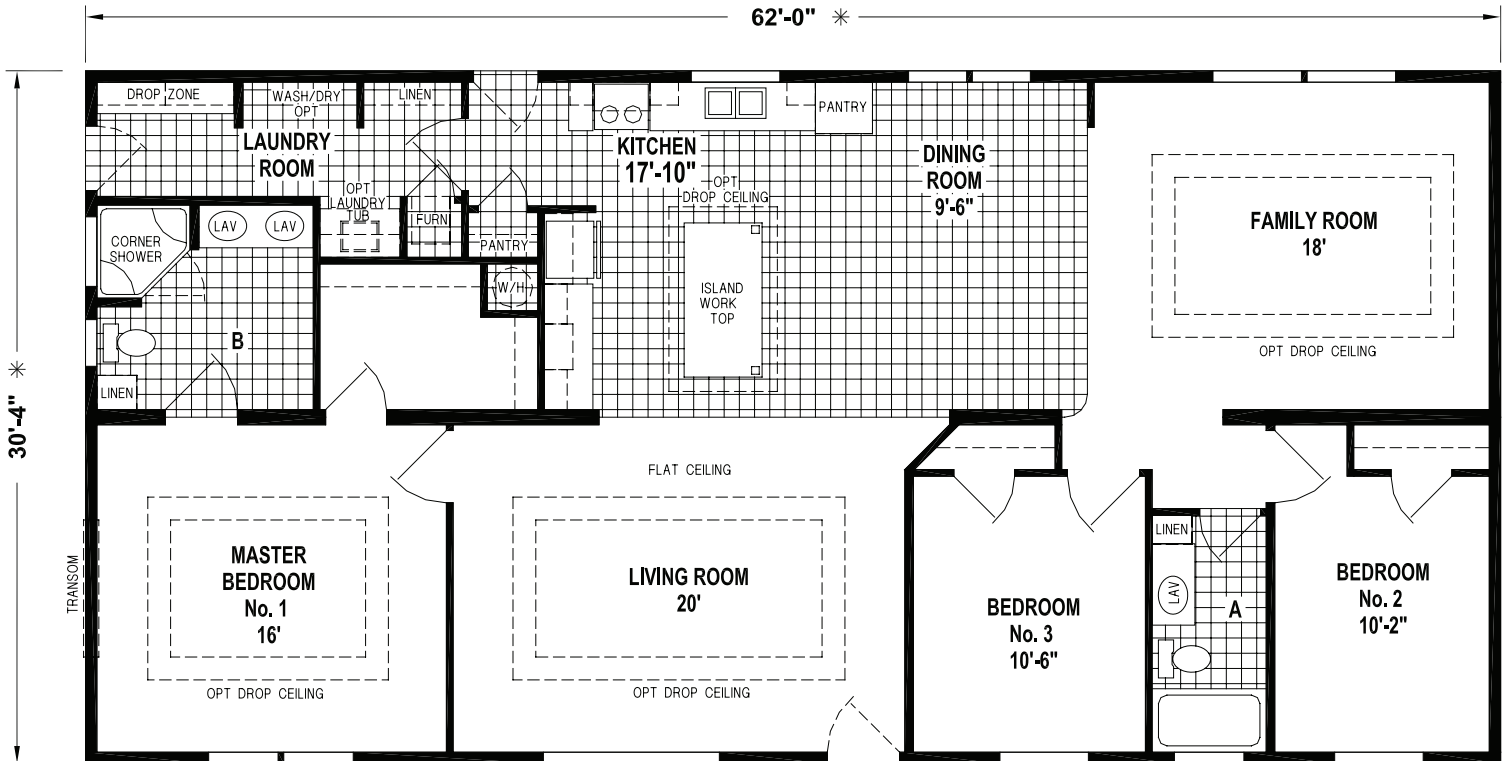
OPTION SLIDING GLASS DOOR



6334B

62' x 32' - 1,880 SQ. FT. - 3 BEDROOMS - 2 BATHS

OPTION SLIDING GLASS DOOR

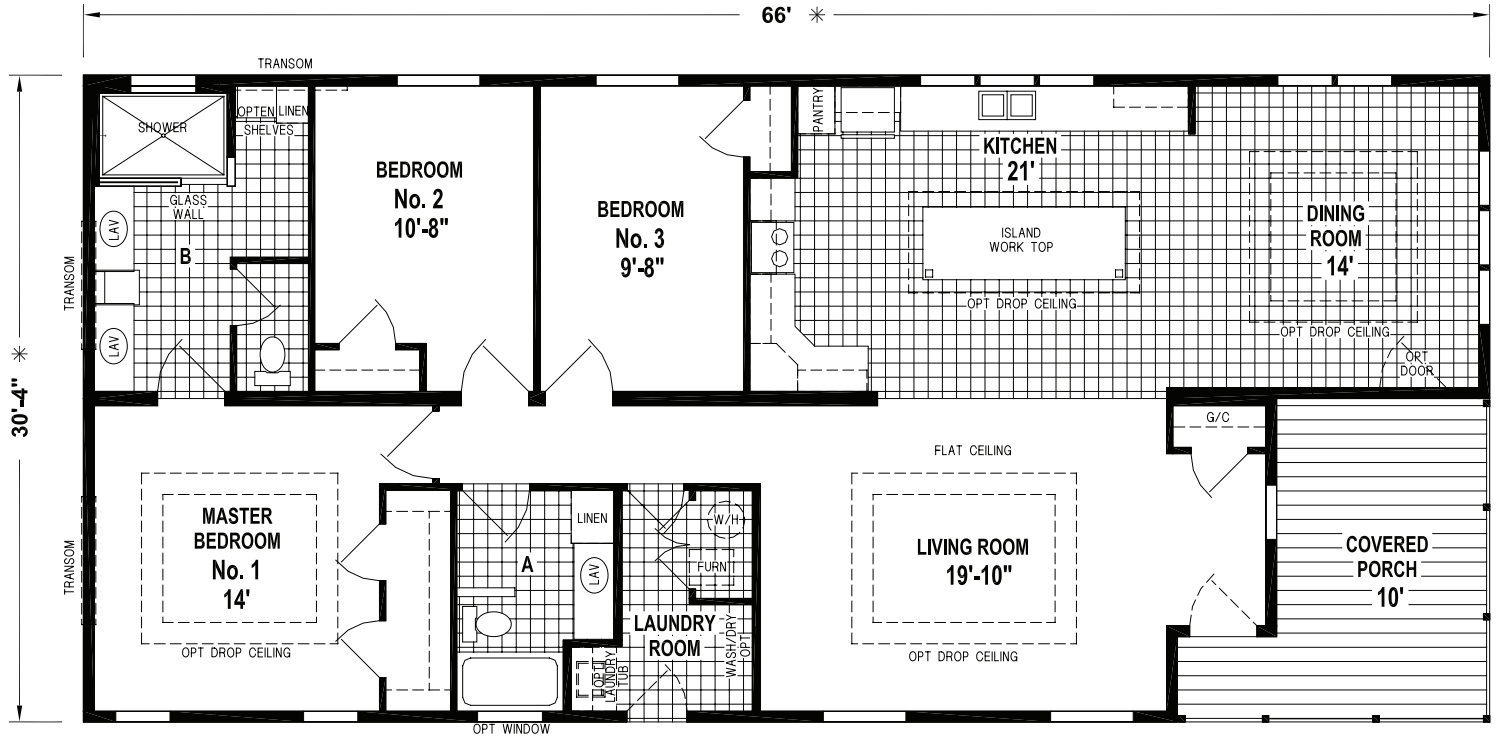


32' SERIES

6302B

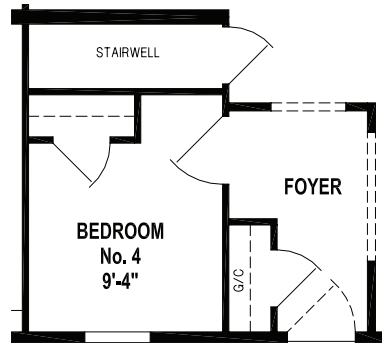
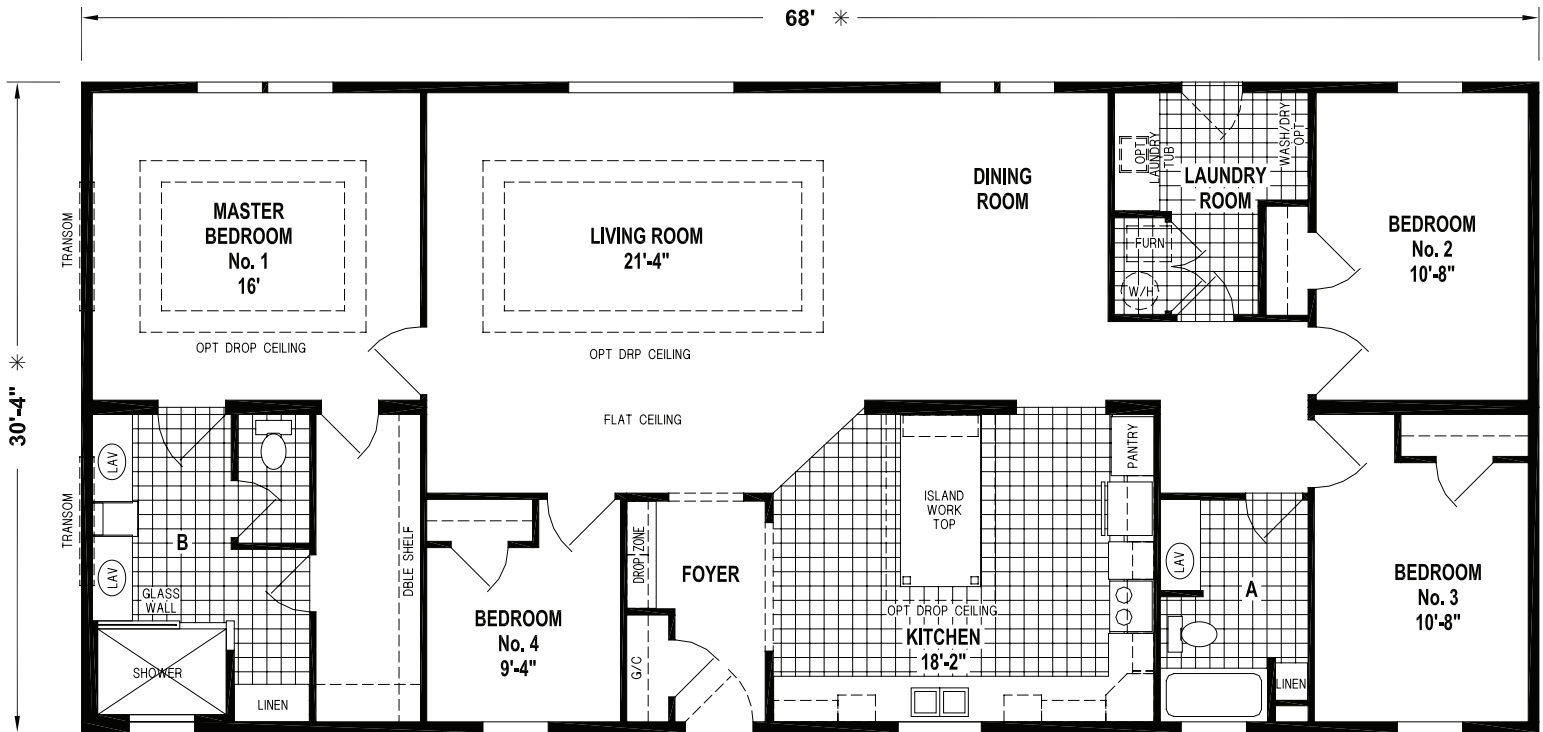
66' x 32' - 2,001 SQ. FT. - 3 BEDROOMS - 2 BATHS

OPTION SLIDING GLASS DOOR

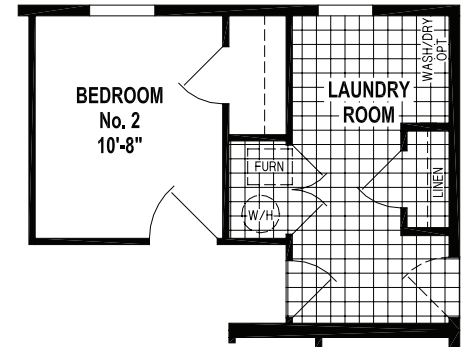


6368B

68' x 32' - 2,062 SQ. FT. - 4 BEDROOMS - 2 BATHS



OPTION STAIRWELL



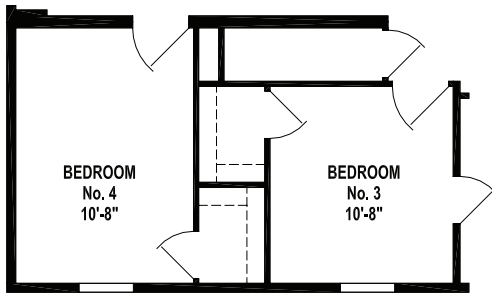
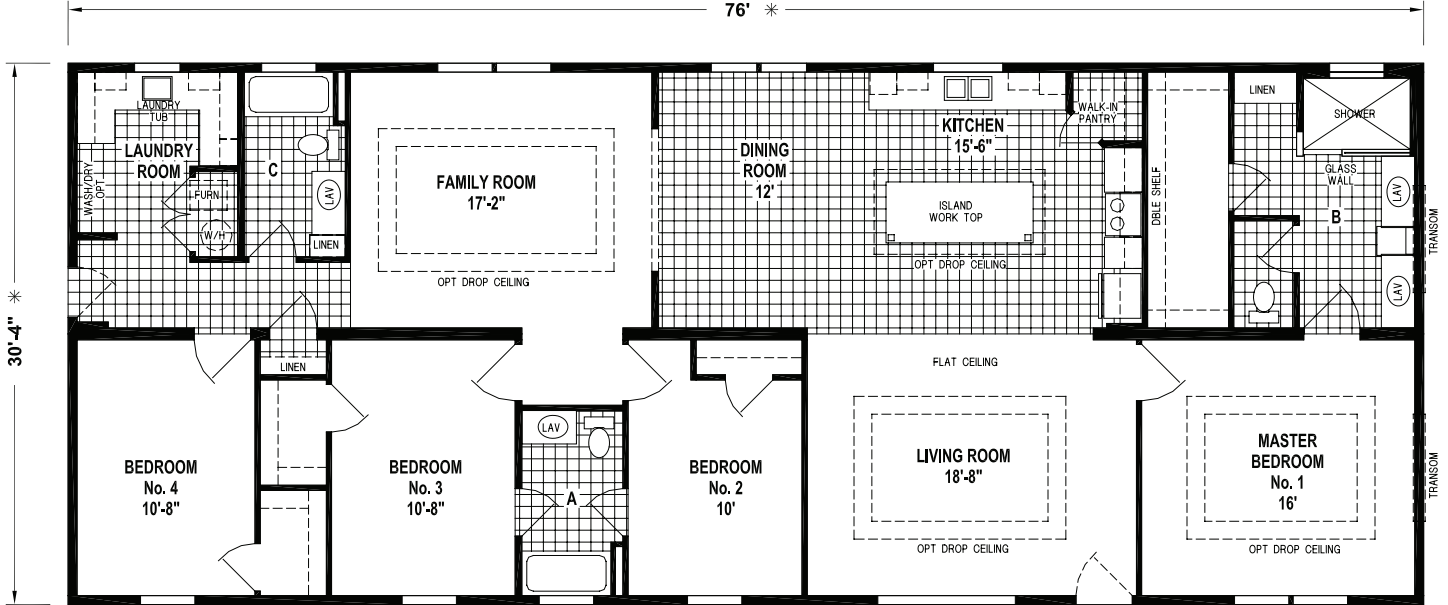
OPTION LAUNDRY ROOM

32' SERIES

6380B

76' x 32' - 2,305 SQ. FT. - 4 BEDROOMS - 3 BATHS

OPTION SLIDING GLASS DOOR



OPTION STAIRWELL



Some features shown may be optional.

SKYLINER

STANDARD FEATURES

CONSTRUCTION

- 8' 6" Sidewall Height
- Continuous Plywood Marriage Line Beam
- 2 x 6 Exterior Wall Construction
- Nominal 3/12 Roof Pitch with 30# Roof Load
- Detachable Hitch
- Recessed Frames
- Thermo zone II Insulation (R-19 Ceiling, R-19 Walls and R-11 Floors)

PLUMBING/ELECTRICAL

- 200 Amp Service
- 2-Bulb Fixtures Throughout (Except Closets)
- Ceiling Fan in Living Room
- (2) Can Lights in Dining Room
- (1) Exterior Receptacle GFI
- (1) Exterior Frost-Free Faucet
- Whole House Water Shut-Off
- Wall Mounted 60" TV in Living Room
- Wall Mounted Sound Bar in Living Room

EXTERIOR

- Vinyl Siding
- Vinyl Lineals on All Windows
- OSB Sheathing with House Wrap
- 25-Year Roof Singles
- 36" Fiberglass Front Door with 3-Lite
- 32" Rear Door with 9-Lite
- Single Hung Low-E Windows

INTERIOR

- Flat Ceilings
- Full Tape and Texture Drywall
- 5 1/4" Crown and Base Trim
- Accent Wall in Living Room and Master Bedroom
- Linoleum at Entry
- Shaw "Macramé" Carpet with 1/2" Carpet Pad
- Tack Strip and Carpet Bar
- 1 1/2" Kiri-Wood Blinds

KITCHEN

- Modular Cabinet Construction
- Flat Panel Doors
- Wood Cabinet Stiles
- Drawer over Door Construction
- Drawer Bank (per floor plan)
- Soft Close Full Extension Drawer Guides
- Center Shelf in Base Cabinets
- 18" Subway Tile Backsplash
- Crown Molding at Cabinets
- Stainless Steel 8" Double Bowl Sink
- Single Lever Faucet with Sprayer

APPLIANCES

- 18 Cu. Ft. Double Door Frost-Free Refrigerator
- 30" Electric Range
- 4-Cycle Dishwasher
- Microwave Range Hood

BATHROOM(S)

- Modular Cabinet Construction
- Flat Panel Doors
- Wood Cabinet Stiles
- 1-Piece Fiberglass Tub/Shower
- 6" Subway Tile Backsplash
- China Lav Bowl
- Single Lever Metal Faucet
- Elongated China Commodes
- Vanity Light and Power Vent Fan with Light

HEATING/UTILITY

- Electric Furnace
- Full Perimeter Heat
- In-Floor Crossovers
- 40 Gallon Electric Water Heater
- Plumb for Washer
- Wire For Dryer
- Wire Shelving above Washer and Dryer

For your comfort and safety, Skyline home designs are approved and inspected for conformance to federal standards.

**Dimensions stated to industry standards. Width and length dimensions are nominal and are not to be used for setup of home on site; consult selling retailers for exact specifications. Overall length does not include approximately four foot hitch. The square footage is approximate and based upon nominal exterior floor size.*

Room sizes are measured from floor ends and wall centers.

Because of progressive product improvement, all prices and specifications are subject to change without prior notice or obligation to Skyline Corporation. Your retailer, an independent contractor, who is not an agent of Skyline Corporation, is the party responsible for your purchase contract and any additions, deletions, alterations, or attachments made to or in your home.

YOUR LOCAL SKYLINE RETAILER:



WWW.SKYLINEHOMES.COM